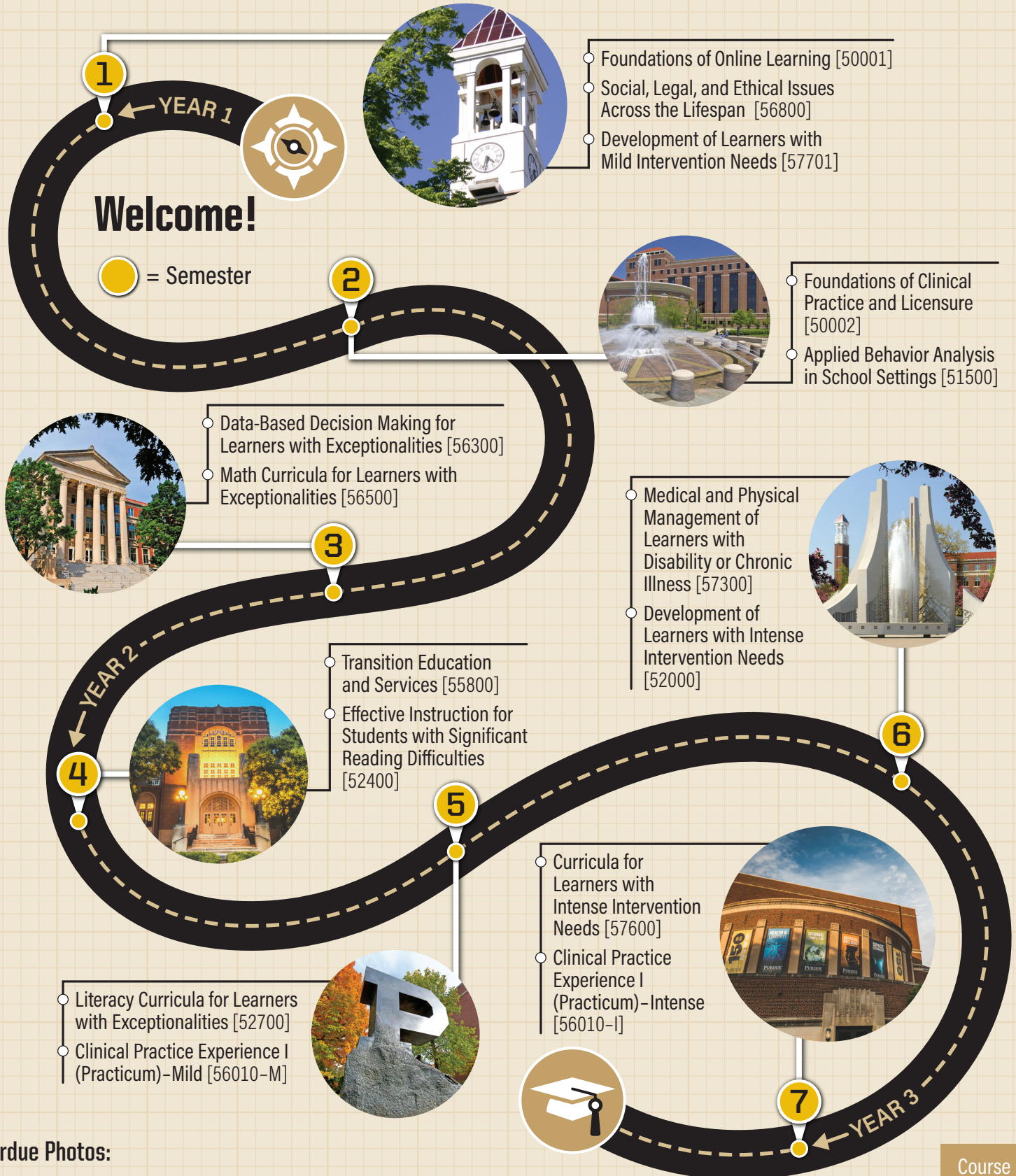


Additional Mild & Intense Intervention Licenses, Blended & Online Teaching License



**Purdue Photos:**

- 1) Bell Tower, 2) Beering Hall, 3) Hovde Hall, 4) Memorial Union, 5) Unfinished Block P, 6) Engineering Fountain, 7) Elliot Hall of Music

Course descriptions on back

# Course Descriptions (by Semester)

**1** *EDPS 50001 (1 credit)*  
**Foundations of Online Learning** – This course explores the knowledge and skills necessary for successful online learning at Purdue University.

○ *EDPS 56800 (3 credits)*  
**Social, Legal, and Ethical Issues Across the Lifespan** – This course introduces the historical perspectives and foundations of education policy, current issues, and research while exploring ethical guidelines concerning individuals with exceptionalities from a comprehensive, life-long, cultural, and diverse perspective.

○ *EDPS 57701 (3 credits)*  
**Development of Learners with Mild Intervention Needs** – This course explores child development and the milestones associated with Cognitive, Social/Emotional, Language and Communication, and Movement and Physical development to better understand atypical development in relation to characteristics and etiologies of mild disabilities.

**2** *EDPS 50002 (1 credit)*  
**Foundations of Clinical Practice and Licensure** – This course guides candidates to complete requirements for clinical practice placement(s) for candidates with unique employment situations.

○ *EDPS 51500 (3 credits)*  
**Applied Behavior Analysis in School Settings** – This course introduces the types, characteristics, strengths, limitations, theoretical approaches, and research-based models of behavior intervention, motivation, and reinforcement techniques used with students with exceptional behavioral needs in school settings.

**3** *EDPS 56300 (3 credits)*  
**Data-Based Decision Making for Learners with Exceptionalities** – This course introduces multiple methods of assessment and data sources used to support data-based decision making for students with mild and intense intervention needs.

○ *EDPS 56500 (3 credits)*  
**Math Curricula for Learners with Exceptionalities** – This course explores research-supported general and specialized math curricula to prepare candidates to design and/or adapt math lessons and instructional materials to meet the math needs of students with exceptionalities.

**4** *EDPS 55800 (3 credits)*  
**Transition Education and Services** – This course explores a variety of resources, strategies, and techniques for promoting successful life transitions for students with mild and intense intervention needs throughout school, postsecondary, and adult settings.

○ *EDPS 52400 (3 credits)*  
**Effective Instruction for Students with Significant Reading Difficulties** – This course explores significant reading difficulties, such as dyslexia, and essential components of effective reading instruction in relation to scientifically-based reading research (SBRR), evidence-based and developmentally appropriate reading instruction and interventions to support students with exceptionalities.

**5** *EDPS 52700 (3 credits)*  
**Literacy Curricula for Learners with Exceptionalities** – This course explores research-supported general and specialized literacy curricula to prepare candidates to design and/or adapt instructional lessons and materials to meet the needs of students with exceptionalities.

○ *EDPS 56010-M (3 credits)*  
**Clinical Practice Experience I (Practicum): Mild** – This course includes a supervised clinical practice experience across two (2) special education settings, one at the elementary level (K-6) and a second experience at the secondary level (5-12), serving students with mild exceptionalities.

**6** *EDPS 57300 (3 credits)*  
**Medical and Physical Management of Learners with Disability or Chronic Illness** – This course explores instructional programs, interventions, and services that support students with intense medical, physical, or chronic health care needs.

○ *EDPS 52000 (3 credits)*  
**Development of Learners with Intense Intervention Needs** – This course explores typical and atypical human development as a foundation to study the characteristics and etiologies of individuals with intense intervention.

**7** *EDPS 57600 (3 credits)*  
**Curricula for Learners with Intense Intervention Needs** – This course explores research-supported general and specialized content-area (Reading, Math, Writing, Science, Social Studies) curricula as well as functional and independent skill curricula to prepare candidates to design and/or adapt instructional lessons and materials to meet the needs of students with intense intervention needs.

○ *EDPS 56010-I (3 credits)*  
**Clinical Practice Experience I (Practicum): Intense** – This course includes a supervised clinical practice experience across two (2) special education settings, one at the elementary level (K-6) and a second experience at the secondary level (5-12), serving students with intense exceptionalities.

## Credentials

1. Licensure in Additional Mild Intervention
2. Licensure in Additional Intense Intervention
3. Licensure in Blended & Online Teaching

## Total Credits

41