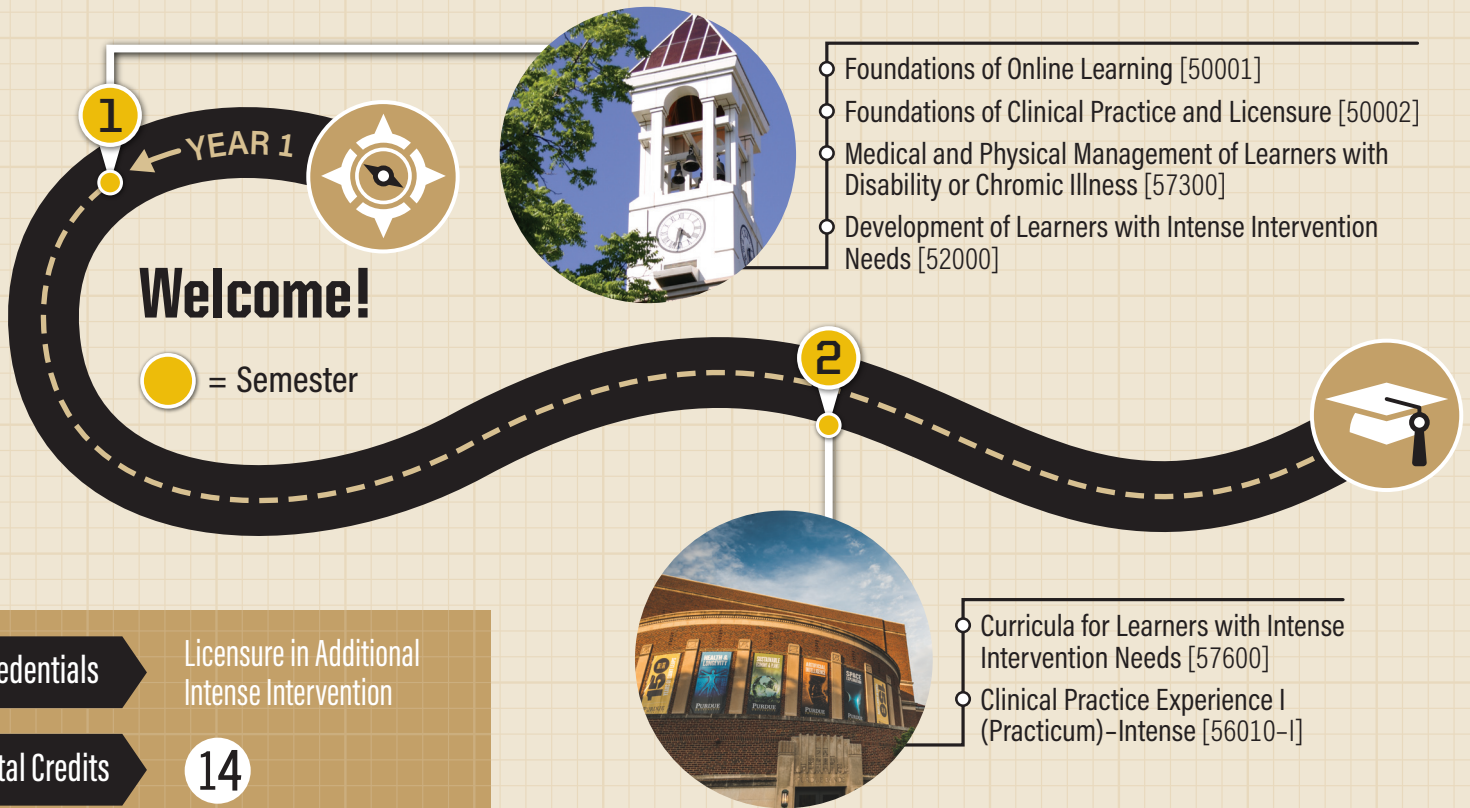


Additional Intense Intervention License



Purdue Photos: 1) Bell Tower, 2) Elliot Hall of Music

Course Descriptions (by Semester)

- 1** *EDPS 50001 (1 credit)*
Foundations of Online Learning
This course explores the knowledge and skills necessary for successful online learning at Purdue University.
- *EDPS 50002 (1 credit)*
Foundations of Clinical Practice and Licensure
This course guides candidates to complete requirements for clinical practice placement(s) for candidates with unique employment situations.
 - *EDPS 57300 (3 credits)*
Medical and Physical Management of Learners with Disability or Chronic Illness
This course explores instructional programs, interventions, and services that support students with intense medical, physical, or chronic health care needs.
 - *EDPS 52000 (3 credits)*
Development of Learners with Intense Intervention Needs
This course explores typical and atypical human development as a foundation to study the characteristics and etiologies of individuals with intense intervention.

- 2** *EDPS 57600 (3 credits)*
Curricula for Learners with Intense Intervention Needs
This course explores research-supported general and specialized content-area (Reading, Math, Writing, Science, Social Studies) curricula as well as functional and independent skill curricula to prepare candidates to design and/or adapt instructional lessons and materials to meet the needs of students with intense intervention needs.
- *EDPS 56010-I (3 credits)*
Clinical Practice Experience I (Practicum): Intense
This course includes a supervised clinical practice experience across two (2) special education settings, one at the elementary level (K-6) and a second experience at the secondary level (5-12), serving students with intense exceptionalities.