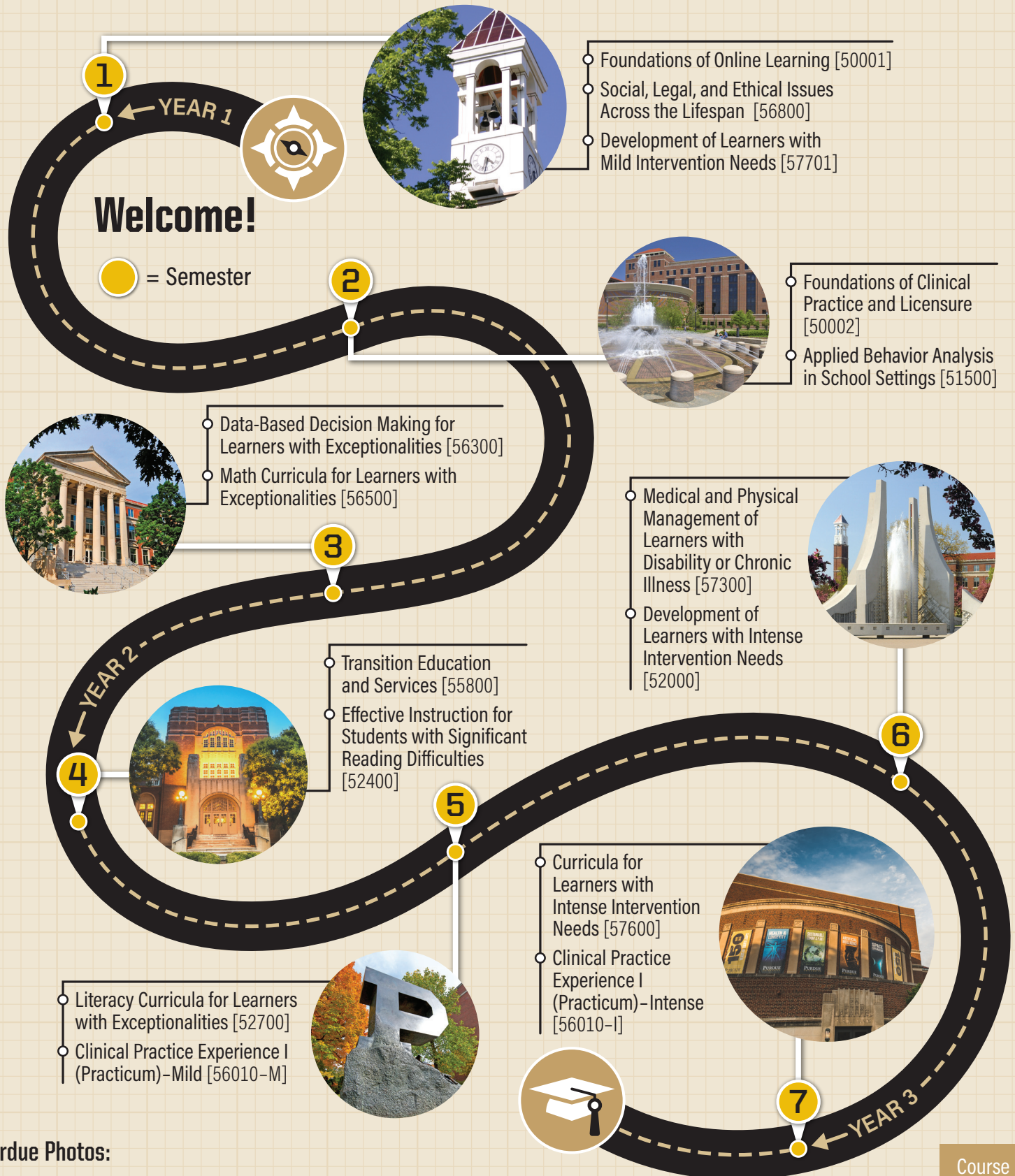


Additional Mild & Intense Intervention Licenses, Blended & Online Teaching License



Purdue Photos:

- 1) Bell Tower, 2) Beering Hall, 3) Hovde Hall, 4) Memorial Union, 5) Unfinished Block P, 6) Engineering Fountain, 7) Elliot Hall of Music

Course descriptions on back

Course Descriptions (by Semester)

1 *EDPS 50001 (1 credit)*
Foundations of Online Learning – This course explores the knowledge and skills necessary for successful online learning at Purdue University.

○ *EDPS 56800 (3 credits)*
Social, Legal, and Ethical Issues Across the Lifespan – This course introduces the historical perspectives and foundations of education policy, current issues, and research while exploring ethical guidelines concerning individuals with exceptionalities from a comprehensive, life-long, cultural, and diverse perspective.

○ *EDPS 57701 (3 credits)*
Development of Learners with Mild Intervention Needs – This course explores child development and the milestones associated with Cognitive, Social/Emotional, Language and Communication, and Movement and Physical development to better understand atypical development in relation to characteristics and etiologies of mild disabilities.

2 *EDPS 50002 (1 credit)*
Foundations of Clinical Practice and Licensure – This course guides candidates to complete requirements for clinical practice placement(s) for candidates with unique employment situations.

○ *EDPS 51500 (3 credits)*
Applied Behavior Analysis in School Settings – This course introduces the types, characteristics, strengths, limitations, theoretical approaches, and research-based models of behavior intervention, motivation, and reinforcement techniques used with students with exceptional behavioral needs in school settings.

3 *EDPS 56300 (3 credits)*
Data-Based Decision Making for Learners with Exceptionalities – This course introduces multiple methods of assessment and data sources used to support data-based decision making for students with mild and intense intervention needs.

○ *EDPS 56500 (3 credits)*
Math Curricula for Learners with Exceptionalities – This course explores research-supported general and specialized math curricula to prepare candidates to design and/or adapt math lessons and instructional materials to meet the math needs of students with exceptionalities.

4 *EDPS 55800 (3 credits)*
Transition Education and Services – This course explores a variety of resources, strategies, and techniques for promoting successful life transitions for students with mild and intense intervention needs throughout school, postsecondary, and adult settings.

○ *EDPS 52400 (3 credits)*
Effective Instruction for Students with Significant Reading Difficulties – This course explores significant reading difficulties, such as dyslexia, and essential components of effective reading instruction in relation to scientifically-based reading research (SBRR), evidence-based and developmentally appropriate reading instruction and interventions to support students with exceptionalities.

5 *EDPS 52700 (3 credits)*
Literacy Curricula for Learners with Exceptionalities – This course explores research-supported general and specialized literacy curricula to prepare candidates to design and/or adapt instructional lessons and materials to meet the needs of students with exceptionalities.

○ *EDPS 56010-M (3 credits)*
Clinical Practice Experience I (Practicum): Mild – This course includes a supervised clinical practice experience across two (2) special education settings, one at the elementary level (K-6) and a second experience at the secondary level (5-12), serving students with mild exceptionalities.

6 *EDPS 57300 (3 credits)*
Medical and Physical Management of Learners with Disability or Chronic Illness – This course explores instructional programs, interventions, and services that support students with intense medical, physical, or chronic health care needs.

○ *EDPS 52000 (3 credits)*
Development of Learners with Intense Intervention Needs – This course explores typical and atypical human development as a foundation to study the characteristics and etiologies of individuals with intense intervention.

7 *EDPS 57600 (3 credits)*
Curricula for Learners with Intense Intervention Needs – This course explores research-supported general and specialized content-area (Reading, Math, Writing, Science, Social Studies) curricula as well as functional and independent skill curricula to prepare candidates to design and/or adapt instructional lessons and materials to meet the needs of students with intense intervention needs.

○ *EDPS 56010-I (3 credits)*
Clinical Practice Experience I (Practicum): Intense – This course includes a supervised clinical practice experience across two (2) special education settings, one at the elementary level (K-6) and a second experience at the secondary level (5-12), serving students with intense exceptionalities.

Credentials

1. Licensure in Additional Mild Intervention
2. Licensure in Additional Intense Intervention
3. Licensure in Blended & Online Teaching

Total Credits

41